

Anti-Bullying Policy

Bramcote College

Statutory or non-statutory:

Statutory

Author/Reviewer:

Simon Morton

Approved by Governors:

19/05/2023

Due for review:

May 24



Bramcote College

A member of The White Hills Park Trust

Introduction

At Bramcote College we aim to provide a supportive, caring, and friendly environment which allows all our pupils to learn in an atmosphere which is focussed on improving their life chances and helping them to maximise their potential. We expect our pupils to act safely, and feel safe, in and outside of school – we do not tolerate any form of bullying and we are committed to preventing and tackling it. We recognise that as children learn and grow together, they may experience fallouts with their peers, but we are committed to supporting our pupils to resolve these **'relational conflicts'** and stop them from progressing to bullying behaviours. If an incident of bullying does occur, we believe our pupils, parents/carers and staff should feel confident in reporting it and know that that all incidents will be dealt with promptly and effectively. Bullying will never be tolerated at our school.

At Bramcote College we encourage open discussions around differences between people, we actively challenge prejudice, and we celebrate diversity. We adopt a contextual safeguarding, trauma-informed and strengths-based approach to bullying and child-on-child abuse, and we are committed to working with families and outside agencies where appropriate.

Policy Development

This policy has been developed to reflect the most recent Keeping Children Safe in Education (KCSiE) Statutory Guidance (1st September 2022) and will be formulated in consultation with the whole school community with input from:

- Members of staff (through staff meetings, consultations, surveys)
- Parents/carers (through written consultations, parents evening meetings, focus groups)
- Pupils (through the school council, surveys)
- Governors (through governor meetings and governor training)

This policy is available:

- Online at <https://bramcote.college/>
- From the school office
- Child friendly information is on display in school

This policy is reviewed and evaluated throughout the academic year. It is updated annually.

Roles and Responsibilities

All staff at our school are aware that children may bully other children, and that this can happen both inside and outside of school, and online. All staff understand the school's approach to dealing with bullying and actions that make up our Anti-Bullying stance and know the important role that they each have in preventing and tackling bullying.

The Head teacher, Mrs Heidi Gale has overall responsibility for Anti-Bullying at our school. They are responsible for appointing an Anti-Bullying Coordinator and liaising with the Governing body, parents/carers, the Local Authority, and outside agencies when appropriate.

The Anti-Bullying Coordinator, Mr Morton is responsible for:

- Policy development and review (ensuring that pupils, staff, governors, and parents/carers have opportunities to contribute)
- Implementing the policy and monitoring/assessing its effectiveness
- Managing the reporting and recording of bullying incidents
- Coordinating Anti-Bullying training and support for staff and parents/carers where appropriate
- Monitoring the effectiveness of strategies for preventing bullying behaviour

The Designated Safeguarding Lead (DSL), Mr Simon Morton and their Deputy, Mrs Faye Parker-Dennis

Safeguarding is the responsibility of all, however all staff, parents/carers and pupils need to be aware of who to report to and how to report any safeguarding concerns.

The nominated Governor with responsibility for Anti-Bullying and Behaviour is Christine Anderson.

What is bullying and how does it differ to relational conflict?

At Bramcote College we have adopted the definition of bullying provided by the Anti-Bullying Alliance:

“Bullying is the repetitive, intentional hurting of one person or group by another person or group, where the relationship involves an imbalance of power. It can happen face to face or online.”

We recognise that bullying can take many forms and can affect any child. It is often motivated by prejudice against particular groups (for example on grounds of race, religion, gender, sexual orientation, special educational needs, or disabilities, or because a child is adopted, in care or has caring responsibilities). Bullying can be motivated by actual differences between children, or perceived differences.

However, we also recognise that incidents may occur between pupils, which may not be deemed as ‘bullying’ but still require support or intervention from trusted adults. These incidents may be referred to as ‘relational conflicts’ or falling out. Relational conflict differs to bullying in the fact that it is usually between individuals or groups who are relatively similar in power and status (a power balance), and the behaviours or incidents occur occasionally (not repetitive) or occur by accident (not intentional). Usually, following a relational conflict incident, pupils show remorse and there is a general willingness to make things right or to resolve the conflict.

Not all relational conflict or falling out leads to bullying, but our school is aware occasionally some can, and we are mindful that unresolved bad feelings or relationship problems left unaddressed can be the start of a pattern of behaviour in which the intention becomes to cause harm or distress.

Although bullying and relational conflicts can take place between individuals, we recognise that it often takes place in front of others (either physically or virtually), pupils who witness these incidents/behaviours are often referred to as ‘bystanders’.

Regardless of whether an incident or situation is deemed as ‘relational conflict’ or ‘bullying’, our school will address the situation and support the pupils to resolve any negative feelings. Our school will monitor children following a relational conflict to ensure that the situation has been resolved and does not escalate to bullying. Our school will challenge, address, and monitor any incidents of bullying, to ensure that it does not continue and that all pupils feel supported (this will include the target, the alleged perpetrator, any bystanders, and the wider school community).

What does bullying behaviour look like?

At Bramcote College we consider the context within which incidents and/or behaviours of concern occur. We will consider the motivations behind the behaviours and will take into account the age and stage of development of the pupils involved. Our focus will always be the safety and welfare of all children involved.

Bullying behaviour may include, but is not limited to:

- Physical – pushing, poking, kicking, hitting, biting, pinching etc.
- Verbal – name calling, sarcasm, spreading rumours, threats, teasing, belittling
- Emotional – isolating others, tormenting, hiding books/belongings, threatening gestures, ridicule, humiliation, intimidating, excluding, manipulation, and coercion
- Sexual – unwanted physical contact, inappropriate touching, abusive comments, homophobic abuse, exposure to inappropriate films etc.
- Online / Cyber – posting on social media, sharing photos, sending nasty text messages, social exclusion etc.
- Indirect – can include the exploitation of individuals such as ‘false friendships’, criminal exploitation, sexual exploitation, and radicalisation
- Prejudice-related – derogatory and discriminatory language and behaviour including that which is racist, homophobic, biphobic, transphobic and disablist in nature. This language and behaviour may be directed towards people because of their race/ethnicity/nationality; because they are lesbian, gay, bisexual, or trans, or are perceived to be, or have a parent/carer, sibling, or friend who is, because they have a learning or physical disability. Such language and behaviour are generally used to refer to something or someone as inferior.

There is no hierarchy of bullying, all forms of bullying are taken equally seriously and will be dealt with appropriately.

Where does bullying take place?

At Bramcote College we understand that bullying is not confined to the school premises. Bullying can take place outside of school, on the journey to and from school and in the local community. Bullying may also take place online (this is sometimes referred to as cyberbullying).

We will offer support and guidance to pupils, parents/carers and families who have experienced any type of bullying whether this has taken place inside school, outside of school or online. We are committed to working with outside agencies where appropriate to prevent and tackle all forms of bullying.

How to report bullying concerns

At Bramcote College we want pupils, parents/carers, staff, and visitors to confidently report bullying and know that their concerns will be taken seriously. We remain committed to supporting and safeguarding all children involved including the target, the alleged perpetrator, any bystanders/witnesses to the bullying behaviour and the wider school community.

We have clear reporting systems for each group of our school community, the effectiveness of these reporting systems is reviewed throughout the academic year and may be expanded to meet the needs of all members of our community.

Pupils, including bystanders/witnesses

We ask that all pupils report concerns of bullying or bullying behaviour to a member of school staff – this can be any member of teaching or non-teaching staff, including a class teacher, a TA, the Head teacher, or a member of the office team. We talk about trusted adults regularly in class and in assemblies to remind our pupils of who they can report concerns to (See Appendix 1)

The member of staff will listen to the pupil and make an initial note of their concerns, they will then discuss next steps with them and reassure them that they will be supported. The member of staff will make a formal record of the bullying report on the school's recording system (CPOMS) and other relevant members of staff will be alerted. The member of staff will directly alert the school's Designated Safeguarding Lead if the report is deemed urgent or if a pupil is considered at risk.

We understand that some pupils may find it difficult to tell a member of staff about their concerns verbally, we therefore have additional reporting mechanisms in place. Our school has an online reporting system called the SHARP System <https://bramcote.thesharpsystem.com/> – the SHARP system is introduced to the pupils at the start of the year and pupils are reminded of it regularly and the information is stored within their individual organisers. Although students can remain anonymous when reporting, we require detailed information of the concern so we can follow-up accordingly. Students do not have to remain anonymous and so this platform can be used by all students if they feel unable to tell a member of staff about their bullying verbally in person, they could send an share their concerns, and these will be followed-up/responded to by the school's pastoral team.

Even if the behaviour/incident which has been reported is deemed 'not bullying' and is thought to be 'relational conflict', school staff will still support the pupils involved and help them to resolve any concerns.

Parents/carers

We understand that it can be very difficult for a parent/carer to be concerned or hear that their child has been the target of bullying, has experienced bullying behaviour or is an alleged perpetrator of bullying.

We ask that if parents/carers have concerns about their child experiencing or perpetrating bullying, that they contact a member of school staff. Initially we ask parents/carers to contact their child's form tutor or head of year (in person/via telephone call/via email) to explain their concerns. The form tutor or head of year will take an initial note of the concerns but may ask to schedule a meeting to allow for more time to discuss the concerns in detail. Following the report and/or the meeting, the form tutor or head of year will make a formal record of the bullying report on the school's recording system (CPOMS) and other relevant members of staff will be alerted to initiate an investigation. The member of staff will directly alert the school's Designated Safeguarding Lead if the report is deemed urgent or if a pupil is considered at risk.

We ask that parents/carers come directly to the school with their concerns rather than discussing them with other members of the school community in person or online as this can make resolving situations difficult and can create complications for both the victim and perpetrators families.

Our school remains committed to supporting pupils and their families in all instances of bullying and relational conflict and will respond to reports promptly. Even if the behaviour/incident which has been reported is deemed 'not bullying' and is thought to be 'relational conflict', school staff will still support the pupils involved and help them to resolve any concerns.

We will endeavour to ensure that all parties are kept informed of progress and any developments, but we will also need to show due regard to GDPR. This may mean, at times, that we are not able to provide or share information or updates regarding other students and we cannot share CCTV footage.

School staff

Our staff work closely with our pupils and therefore may notice a change in a pupil's behaviour or attitude that might indicate that something is wrong before receiving a report from a pupil or a member of the school community. If staff have any concerns about a pupil's welfare or are concerned that a pupil is displaying behaviours that may show they are the target of bullying or perhaps perpetrating bullying, they should act on them immediately rather than wait to be told.

We ask that staff receiving the report should take an initial note of the concerns and will then make a formal record of the bullying report on the school's recording system (CPOMS) and other relevant staff members will be alerted, including the Pastoral Support Team and Designated Safeguarding Leads. The member of staff must directly alert the school's Designated Safeguarding Lead if the report is deemed urgent or if a pupil is considered at risk.

Visitors

We ensure that all visitors to our school are aware of our Child Protection and Safeguarding procedures and which staff member they should report any concerns to (the member of staff may differ depending on the purpose of the visit e.g., supply teacher, governor, external agency etc.).

We ask that if a visitor to our school has any concerns about bullying behaviour that they have witnessed, or been told about, that they report their concerns at the earliest opportunity in person to the school's Designated Safeguarding Lead/the Head teacher/a member of the Senior Leadership Team. We ask that visitors report their concerns in person by the end of the school day or via email safeguarding@bramcote.college

It is not appropriate to wait until the following day or leave a written note with concerns. The member of staff receiving the report either in person or via email, should take an initial note of the concerns and will then make a formal record of the bullying report on the school's recording system (CPOMS) and other relevant staff members will then be alerted. The member of staff will directly alert the school's Designated Safeguarding Lead if the report is deemed urgent or if a pupil is considered at risk.

How our school will respond to reports of bullying

At Bramcote College all reports of bullying or reported concerns of bullying behaviours will be taken seriously and investigated. Even if an incident is deemed 'not bullying' or a 'relational conflict', our school remains committed to supporting all pupils who have been involved and effected.

Our school keeps records of all reports of bullying, this information is stored on our school's recording system (CPOMS). These records are used to identify trends and inform our school's preventative work. Information from these records is discussed regularly at staff meetings to ensure that all staff are kept up-to-date and are alert to any ongoing concerns.

Our staff use a contextual approach to safeguarding and each incident will be dealt with on a case-by-case basis. Some of our school's responses may include, but may not be limited to:

- Talk to all pupils involved in the reported incident – this may include the target/survivor, the alleged perpetrator, and any bystanders/witnesses
- Talk to the parents (of the target/ survivor and/or the alleged perpetrator)
- Implement appropriate sanctions in accordance with our school's behaviour policy. These sanctions will be graded according to the seriousness of the incident, but will send out a message that bullying is unacceptable
- Discuss the report/incident/case with other agencies and organisations when appropriate and make referrals to those organisations when appropriate
- Liaise with the wider community if the bullying is taking place off the school premises (e.g., the Police, District Council etc.)
- Keep in touch with the person who reported the incident/behaviour to inform them that action has been taken – this may include a pupil, a parent/carer/guardian, a member of staff or visitor, or another member of the school community. We will endeavour to ensure that all parties are kept informed of progress and any developments, but we will also need to show due regard to GDPR. This may mean, at times, that we are not able to provide or share information or updates.
- Implement a range of follow-up support/interventions appropriate to the situation (this may include informal or formal restorative work with the target and alleged perpetrator, solution-focused meetings, individual or group work with the target, individual or group work with the alleged perpetrator, individual or group work with any witnesses/bystanders, group work with the wider-school community etc.)
- Monitor the effectiveness of actions taken and reassess/take more actions if appropriate
- Liaise with the Designated Safeguarding Lead if there are safeguarding issues or concerns – a DSL may then refer to the Nottinghamshire MASH
- Refer to the Nottinghamshire County Council 'Pathways to Provision' document and complete an EHAF if appropriate

If a parent/carer is not satisfied with our school's actions, we ask that they follow our school's complaint policy and procedures. This is available online from our school website and on request from the school office.

Strategies for preventing bullying

At Bramcote College , we are committed to the safety and welfare of our pupils, and therefore we have developed the following strategies to promote friendly and positive behaviours and discourage bullying behaviours. Throughout the academic year, the effectiveness of these strategies is reviewed, and the variety of strategies may be expanded to address specific concerns or meet the needs of all members of our community.

The strategies we use include, but are not limited to:

- Active school council with representatives from each year groups
- Student Leaders
- Peer-mentoring schemes
- Taking part in Anti-Bullying week annually (November)
- Taking part in Safer Internet Day annually (February)
- Robust R(S)HE curriculum for all year groups
- Specific curriculum inputs for online safety and cyberbullying
- Drop down days / themed days to promote equality and tackle prejudice
- End of term / end of academic year celebration events
- Opportunities for pupils to share their voice and opinions – through surveys etc.
- Inclusive displays throughout the school with a diverse range of work, photographs etc.
- ELSA support / Lego therapy / mentoring/ counselling for identified students
- Specific initiatives for identified individuals or groups
- Parent information board and area on the school website
- Regular staff training and development for all staff
- All staff model expected behaviour

Breaches / Complaints

Breaches to this policy will be dealt with in the same way that breaches of other school policies are dealt with, as determined by the Head teacher and Governing Body.

If a parent/carers is not satisfied with our school's actions, we ask that they follow our school's complaint policy and procedures. This is available online from our school website, and on request from the school office.

Links with other policies

You may find it helpful to read this Anti-Bullying policy alongside the other following school policies:

Policy	How it may link
Behaviour Policy	Includes details about the rewards and sanctions for pupils
Safeguarding Policy, including Child-on-child Abuse Policy (Previously named 'Peer- on-peer')	Includes information about child protection procedures and contextualised safeguarding. Includes links to bullying – specifically sexualised bullying and exploitation.
Online Safety / E-Safety / Acceptable Use Policies	Includes information about children's online behaviour and details about online bullying/cyberbullying
Equalities Policy	Includes information about our school's approach to tackling prejudice and celebrating differences. Links to prejudice-related language and crime and the protected characteristics
RSHE / PSHE Policy	Includes information about our school's RSHE programme and how we teach about relationships, friendships, and bullying
Complaints Procedure	Includes information about how to make a complaint if you are not satisfied with the school's response

Monitoring and Review

This policy is reviewed and evaluated throughout the academic year. It is updated annually.

Date approved by the Governing Body: 17th May 2023

Date to be reviewed: September 2023

Appendix 1: Who to Talk to: The Pastoral Support Team

Are you worried or concerned about something or someone else?

Your Safety and Well-Being are our Priority

It is important to us that you feel safe in school

If you have any worries or concerns, please speak to us

If you cannot do this in person, send an email or use the SHARP System



Gale



Mr Morton



Mrs Parker-Dennis



Mrs Kirby



Mrs Crouch



Donohoe



Mrs Mansfield



Mrs Bateman



Mrs Agius



Miss Harrison



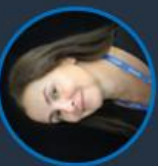
Wood



Joe Sims



Ben Marlow



Miss Bosley



Miss Bosley

Appendix 2: Key Contacts and Email Addresses

- ✓ Reporting concerns to the pastoral team, which can be done anonymously
<https://bramcote.thesharpsystem.com/>

- ✓ Safeguarding reporting email safeguarding@bramcote.college
- ✓ RSHE Policy <https://bramcote.college/download/policies/curriculum/RSHE%20Policy.pdf>
- ✓ Behaviour Policy
<https://bramcote.college/download/policies/safeguarding/Behaviour%20Policy.pdf>
- ✓ Child Protection Policy
<https://bramcote.college/download/policies/safeguarding/Child%20Protection%20and%20Safeguarding%20policy.pdf>
- ✓ Equality <https://bramcote.college/download/policies/equality/Equality%20Policy.pdf>
- ✓ Online/ E-Safety Policy <https://whptrust.org/about/documents/safeguarding>
- ✓ Complaints procedure
<https://bramcote.college/download/policies/complaints/Complaints%20Policy.pdf>

Appendix 2: Safeguarding Contact Details



Simon Morton
Deputy Headteacher
& DSL



Faye Parker Dennis
Assistant Headteacher
Head of BC&F & DSL

safeguarding@bramcote.college

Student Safety and Well-Being are our Priority

If you have any concerns regarding the safety or wellbeing of a student at Bramcote College, please report it immediately - do not wait

- Write it down
- Log all information accurately
- Do not promise confidentiality
- Speak with the DSLs or a member of the pastoral team ASAP
- Bramcote staff should log concerns on CPOMS
- Or email safeguarding@bramcote.college

Listen

Record & Respond

Report



Bramcote College
A member of The White Hills Park Trust



bramcote college
sixth form
Bramcote College Foundation



The White Hills Park Trust
A Culture of Excellence